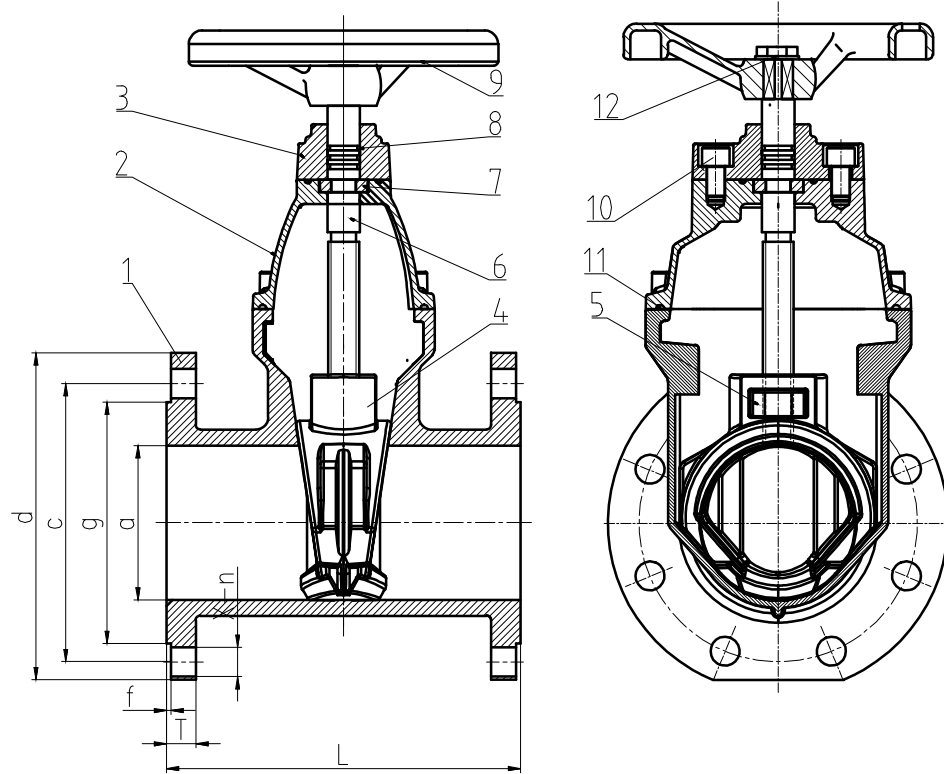


Z45X-10/16Q DN50-300

technical specifications

PN	10/16	
Low pressure test		0.6
Seal test pressure	MPa	1.1/1.76
Shell test pressure		15/2.4
Working temperature	℃	≤120
Applicable medium	Water	



- Technical requirement
- 1.Design and manufacture in accordance with DIN 3352;
 - 2:Structure length in accordance with DIN 3202;
 - 3.Flange standard in accordance with DIN 2632-2633;
 - 4.Pressure test standard accordance with DIN 3230.

Technical parameter DIN 3352 F4 PN10/16

DN	d		c		x-φn		T		f		g		L (F4)
	1.0MPa	1.6MPa	1.0MPa	1.6MPa	1.0MPa	1.6MPa	1.0MPa	1.6MPa	1.0/1.6MPa	1.0/1.6MPa	1.0/1.6MPa		
50	165	165	125	125	4-φ19	4-φ19	19	19	3	99	150		
65	185	185	145	145	4-φ19	4-φ19	19	19	3	118	170		
80	200	200	160	160	8-φ19	8-φ19	19	19	3	132	180		
100	220	220	180	180	8-φ19	8-φ19	19	19	3	156	190		
125	250	250	210	210	8-φ19	8-φ19	19	19	3	184	200		
150	285	285	240	240	8-φ23	8-φ23	19	19	3	211	210		
200	340	340	295	295	8-φ23	12-φ23	20	20	3	266	230		
250	395	405	350	350	12-φ23	12-φ27	22	22	3	319	250		
300	445	460	400	410	12-φ23	12-φ27	24.5	24.5	4	370	270		

No.	Code	Name	QTY.	Material	Single Weight	Total Weight	Remarks
12		Screw	1	SS			
11		Sealing apron	1	EPDM			
10		Bolt	6	45			
9		Handwheel	1	GGG40			
8		O ring	3	Silicon rubber			
7		Locating sleeve	1	Brass			
6		Stem	1	420			
5		Stem Nut	1	Brass			
4		Disc	1	GGG50/40+EPDM			
3		Gland	1	GGG40			
2		Cover	1	GGG40			
1		Body	1	GGG40			

				Assembly drawing			Bundor Valve Technology Co., Ltd	
							Resilient Gate valve	
							Z45X-10/16Q DN50-300	
Mark	QTY	Change file No.	Sign	Date	Pattern marking		Weight	Proportion
Designer		Standardization						
Auditor		Approver			Total Page:		Page:	
Processors		Date						