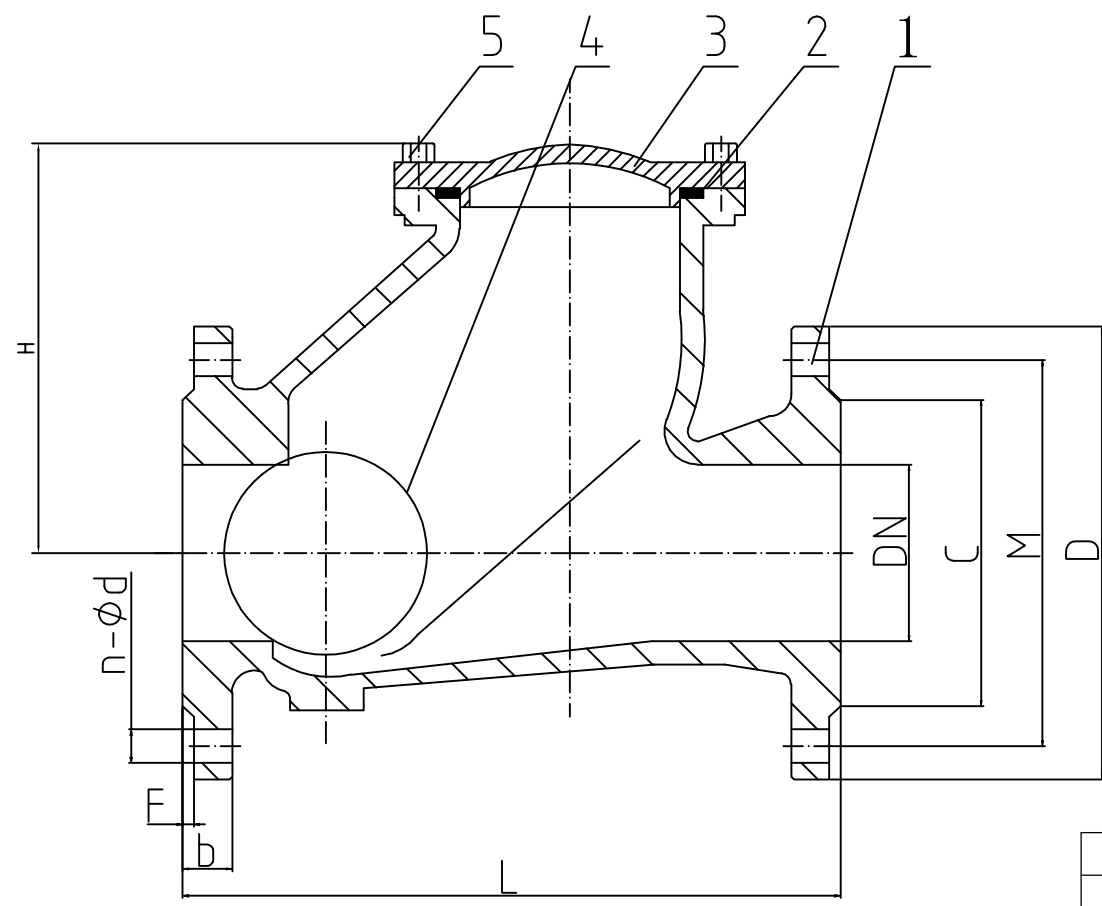


Inspection specification	
Nominal pressure	PN16
Working temperature	0°C to 80°C



DN	L	H	D	M	b	n-d
50	219	120	160	125.0	18	4-18
65	220	130	180	145.0	18	4-18
80	257	140	195	160.0	19	8-18
100	280	180	215	180.0	21	8-18
125	320	190	245	210.0	22	8-18
150	355	240	280	240.0	23	8-22
200	435	290	335	290.0	24	12-22
250	498	300	405	355	27	12-26
300	555	380	460	410	32.0	12-26

Technical requirements

- 1.The valve body side flange should conform to GB/T 17241.6;
- 4.Valve inspection and test standards should comply with GB/T 13927;

5	Bolt		Stainless steel
4	ball	1	Steel+EPDM
3	Bonnet	1	DI
2	Gasket	1	NBR
1	Body	1	DI
NO.	Name	Qty	Material

					Assemble Drawing		Bundor Valve Technology Co., Ltd.	
							Spherical check valve	
Mark	No.	Change File No.	Sign	Date			HQ41X-16Q	
Designer		Standardization		Drawing Mark		Weight		
Corrector								
Auditor		Authorized						
Technologist		Approved by		Total Pages		Total Pages		